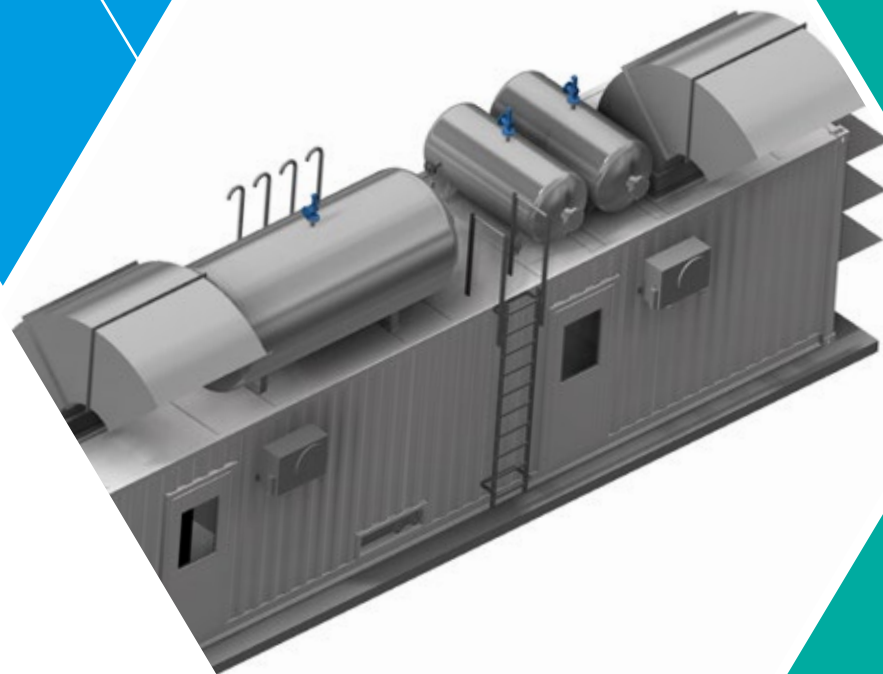




# Nitrogen Generation Plant

For Usage as Barrier Gas, Inert Gas and Instrument Air



**N<sub>2</sub>**

## Nitrogen Generation on the Go

You require technical gases in several places and for various applications?  
CRYOTEC Anlagenbau GmbH can offer you compact nitrogen generating plants which are easy to transport. Our flexible „Plug + Play“ can be installed in very short start-up times at any location even under extreme climatic conditions worldwide.

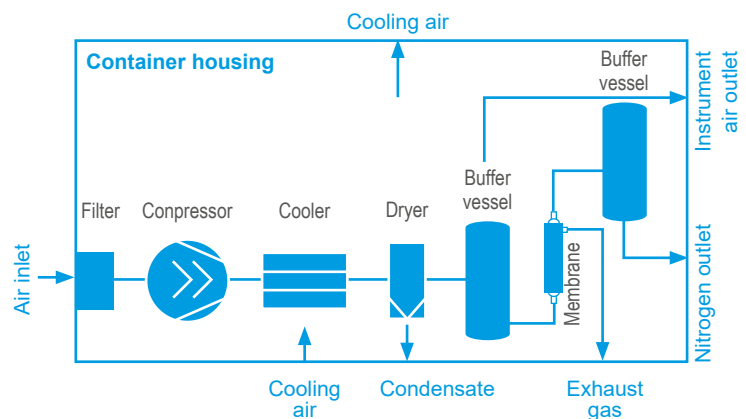
## Special features of the nitrogen generation plant

- Quality of Nitrogen:
  1. Nitrogen Concentration: at least 95%
  2. Amount of nitrogen between 23 to 310 Nm<sup>3</sup>/h (depending on capacity of compressor as well as on size and amount of used membranes)
- Based on capacity of compressor, produced instrument air may vary from 55 to 750 Nm<sup>3</sup> /h
- Parallel generation of instrument air
- Fully air-cooled (if required)
- Fully automated and self-sufficient by means of a local PLC Control
- Possibility of the redundant lines, which can additionally be cross-connected.

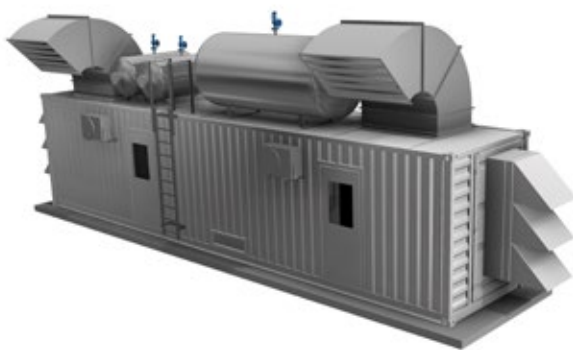
## Nitrogen Generator

The nitrogen generation plant is used to provide nitrogen with a concentration of at least 95 Vol.-% (*O<sub>2</sub> residual concentration* ≤ 5 Vol.-%) as well as of high-quality instrument air. All equipment is housed in a steel box (similar to a 40' container). This is accordingly thermally insulated as well as air-conditioned. The steel box container has installed filters to avoid any sand or insects inside container and production system. There are also installed openings for maintenance and service.

In this container are installed air-cooled, two-stage screw compressors, dryer, filters, membrane modules, buffer vessels and analyser systems.



The production system can be built with redundancy to improve the availability of the production plant in case of maintenance or service.



Please ask for special requirements and features!

### GENERAL DATA

<b>Operating pressure:</b>	ca. 10 bar/g
<b>Design pressure:</b>	12 bar/g
<b>Power supply:</b>	400 V ± 10%
<b>Connection capacity of the entire system:</b>	max. 160 kW (All electrical loads in operation, with full feature version)
<b>Sound power level:</b>	max. 90 dB (A) (1 m distance from Container outer wall)
<b>Total space requirement:</b>	40' Container Steel box (High Cube)
<b>Delivery time:</b>	5-6 Months
<b>Budgetary price:</b>	300,000 to 500,000 Euro (depending on technical requirements)

Status: September 2017



## CONTACT

### CRYOTEC ANLAGENBAU GMBH

Dresdener Straße 76  
04808 Wurzen, Germany

Phone: +49 3425 89 65 - 1610  
Fax: +49 3425 89 65 - 1638

Email: [contact@cryotec.de](mailto:contact@cryotec.de)  
Web: [www.cryotec.de](http://www.cryotec.de)